



Ethafoam[®] 2222

Acoustic Insulation Foam

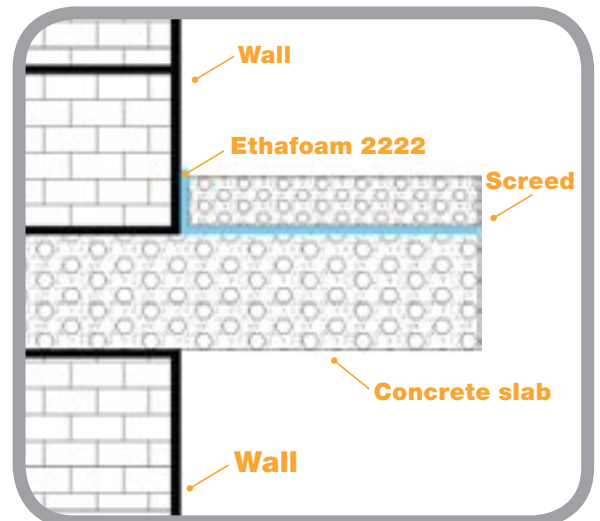
Ethafoam[®] 2222 is a closed-cell polyethylene foam material designed for use as a resilient acoustic insulation layer in concrete floor structures.

Key benefits include:

- **Superior impact sound insulation** – conforms to European Building Standards.
- **Minimal moisture retention** – closed-cell structure allows use in humid environments.
- **Lightweight** – easy to install.
- **Low profile installation** – minimal increase in floor height.
- **Ageing resistant** – formulated to withstand degradation caused by alkaline in concrete floors.
- **Highly resilient** – withstands the rigours of an on-site environment.
- **Versatile** – can be installed as single or multiple layers dependent on space and performance requirement.

Product Dimensions:

Thickness	5mm
Roll Length	75m
Roll Width	1.5m
Roll Diameter	0.75m
Surface Area of Roll	112.5 m ²



Sealed Air is a leading supplier of innovative polymer films, foams, composites, coring materials and technologies for the construction industry. Our experience stretches from residential to commercial construction, including applications in floor underlays, thermal insulation and concrete separators. We understand the importance of compliance, so we work closely with industry and government agencies to ensure alignment with building codes and regulations.

Ethafoam® 2222

Acoustic Insulation Foam

Physical Properties of Ethafoam® 2222

PHYSICAL PROPERTIES	TEST METHOD	UNITS	VALUE
Thickness	EN12431	mm	5
Compressive strength 10% Compression 25% Compression	DIN 53577	kN/m ²	10 30
Density	ISO 845	Kg/m ³	33
Impact sound insulation	EN ISO 140-7	L'nT,w (dB)	52
Airborne sound insulation	EN ISO 140-4	DnT,w + Ctr (dB)	48
Thermal conductivity	ISO8301	W/mK	0.04
Dynamic stiffness	EN29052-1 ISO9052-1	MN/m ²	70
Water vapour diffusion	EN12086		4000
Ageing resistance	SP0414 ISO1798	years	50
Water absorption (after 24 hours)	DIN53428	volume %	0.5

Impact Sound Test Results

TEST METHOD	UNITS	VALUE
EN ISO 140-7: 1998	L'nT,w (dB)	52*

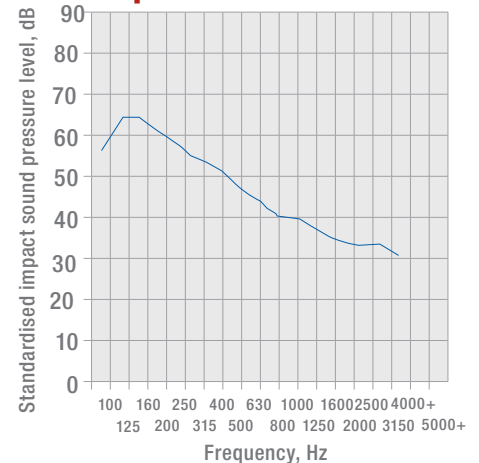
* Criteria to pass test is < than 60 dB



S R L Sound Research
Laboratories Limited

Sound Research
Laboratories Limited
Holbrook House, Little Waldingfield
Sudbury, Suffolk CO10 0TH
Test Report No. C/07/5L/3922/R03

Impact Sound Insulation



Sealed Air

Specialty Materials
Telford Way
Kettering NN16 8UN
United Kingdom
+44 1536 315700 Fax: +44 1536 410576
www.sealedair-emea.com

Corporate offices: Sealed Air Corporation,
200 Riverfront Boulevard, Elmwood Park, NJ 07407, USA
Sealed Air has companies throughout the world. www.sealedair.com
© Sealed Air Corporation 2007. All rights reserved.

® Reg. U.S. Pat. & TM Off. © Sealed Air Corporation (US) 2006. All rights reserved.

Printed in the U.S.A.

The "9 Dot Logo" and "Sealed Air" are registered trademarks of Sealed Air Corporation (US).

Our Products Protect Your Products®